

Des femmes jeunes parlent aux médecins - de leur diagnostic à l'après cancer

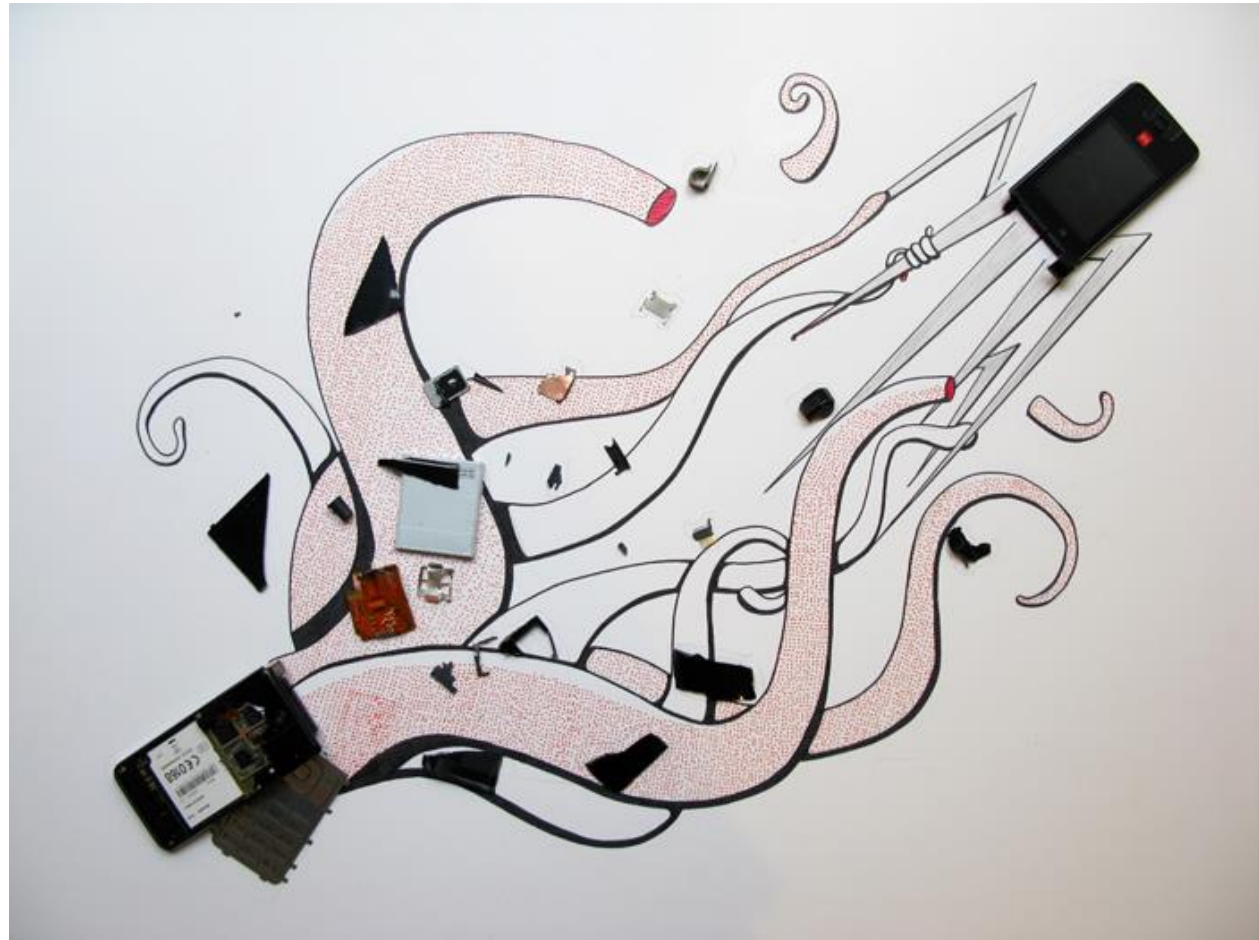
Virginie Adam*

Natacha Espié**

Psychologues- Cliniciennes

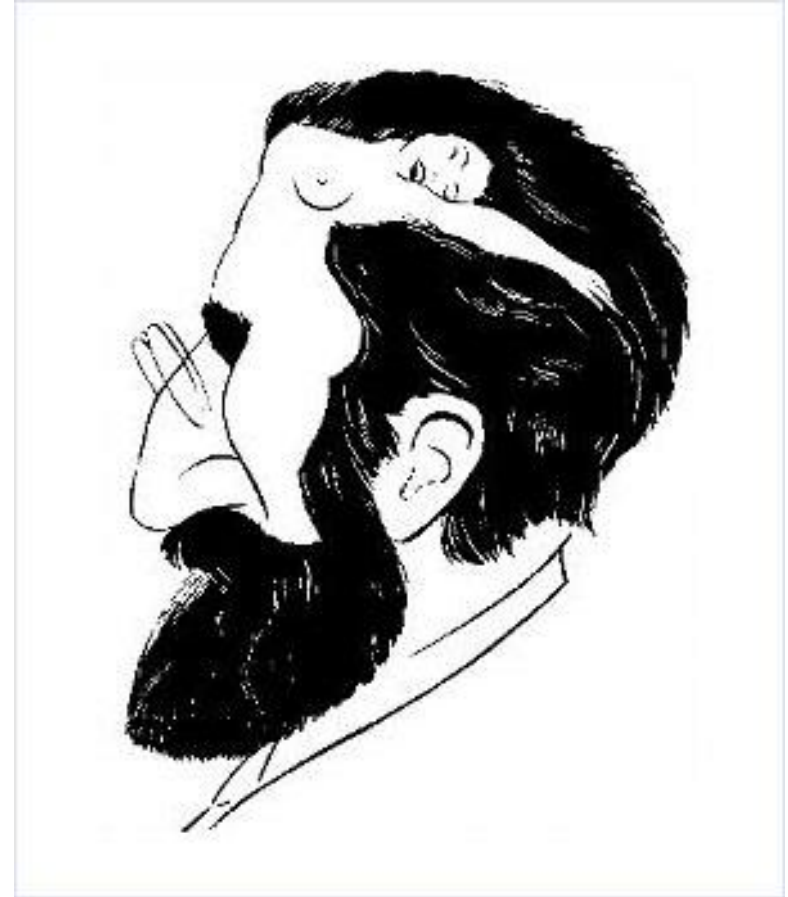
Centre Alexis Vautrin Nancy*, Saint Louis réseau sein Paris*

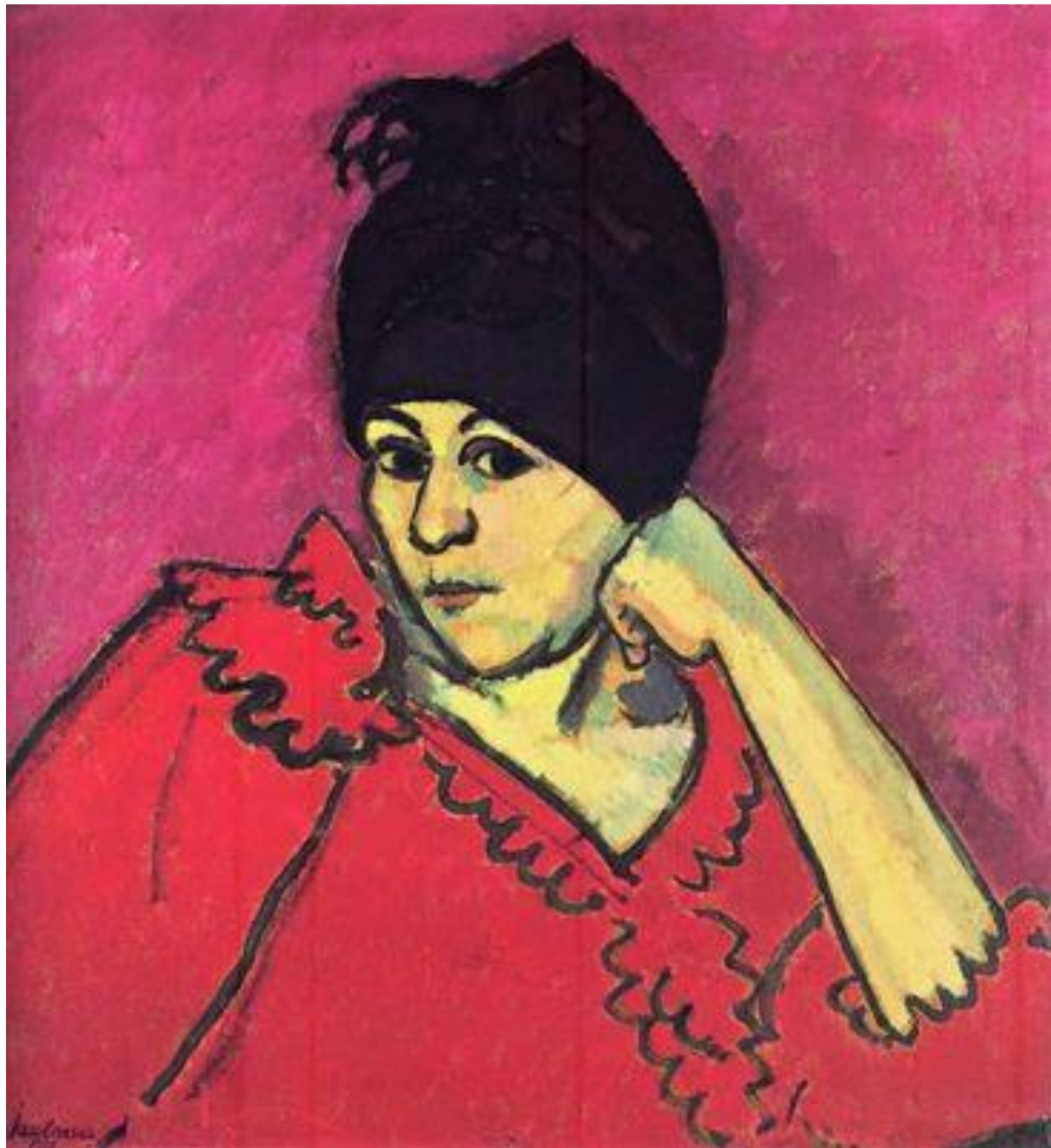
Le cancer est rupture



L'inconscient des médecins

...

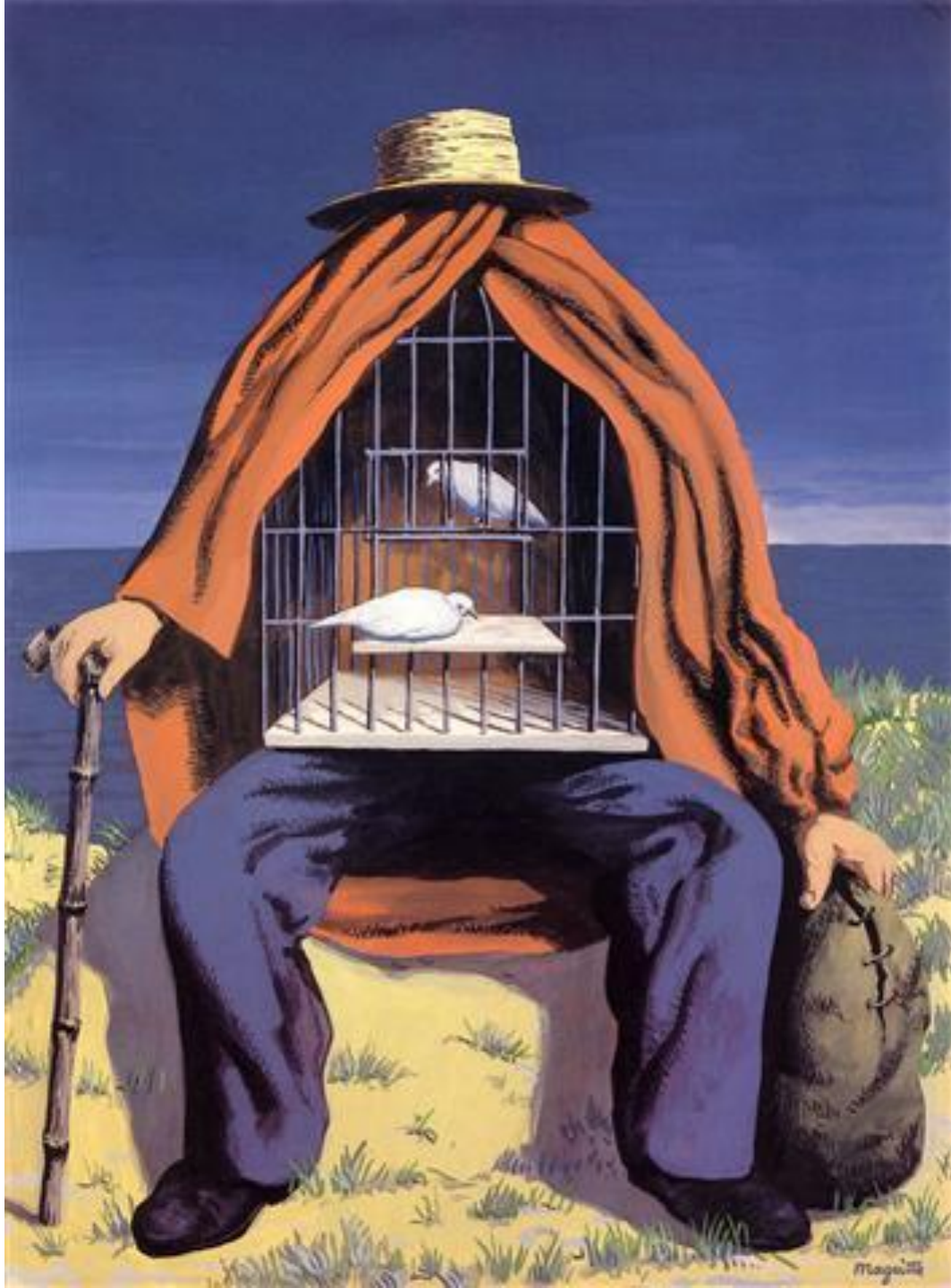












Cancer, couples, corps = un cocktail explosif











